

Benesse House Museum: Notice of Exhibition Changes from January 25th, 2019

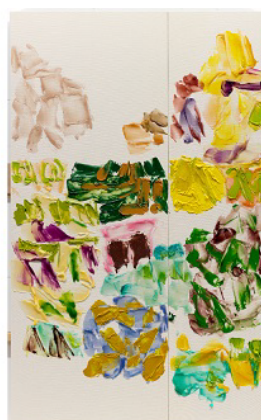
"This Must Be the Place = 'Hinaburi' - New Work by Kenjiro Okazaki and Benesse Art Site Naoshima"

This January a first exhibition of works by Kenjiro Okazaki for the Benesse Art Museum will coincide with a renewal of exhibits for a portion of the collection. Kenjiro Okazaki engages in varying genre-spanning activities including painting, sculpture, architecture, landscape design, criticism, curation, picture book production, and educational projects. What sort of 'sense of place' did he feel in the landscape of Naoshima, and how will it be reflected in these works? What new readings and perspectives will be projected to the existing collection in the context of this addition? With "Hinaburi" as the key word, we hope to make this an opportunity for reflecting anew on the meaning of the places and landscapes surrounding Benesse Art Site Naoshima.

We hope that visitors will take this opportunity to experience harmony with the landscape and think about the concept of "Benesse"(Live Well).

"Hinaburi and Arcadia. 'Hinaburi' usually means rustic. However, 'hina' can also mean 'another place,' something rare, beautiful, and fleeting that has come from elsewhere. In the outskirts often called the countryside, vertically piercing through the oppositions between center/periphery, sky/earth, life/death, lies a holy brightness that renders such dichotomies completely ineffective. Here, you discover an entirely different place. In this way, 'Hinaburi' and Arcadia share the same mythological structure. The soul lives within this brightness. I look at the artworks of this collection through this brightness." way, 'Hinaburi' and Arcadia share the same mythological structure. The soul lives within this brightness. I look at the artworks of this collection through this brightness."

(Kenjiro Okazaki)



【Title】

I have heard their roar but have never heard them speak. Their beard grows and they cry like a baby. They tumble down to earth with their mane standing on end, this error borne of ignorance. They shot an arrow from a distance and left behind the arrowhead, with no knowledge of such, pitiless Ajisukita. The flames had drunk up all the palm by the shore, Kahikone. Their tail that looks like smoke, their limp idleness. Captivated by their divine face covered in golden scales. We leave the countryside, leaving behind these beloved shores, but the future, even if we don't go looking for it, remains lined up above the furrows in the field with its fine spikes waving. When the flowers bloom, the bees will also hope for the good weather to hold. Just who is it that remains in that beehive thick with honey?

(left)

What we see and hear as a guest (even if it is frightening) is novel to the eyes and ears, and because they know nothing, the traveler accepts everything. Coloring the sky, staining the hills, Amenowakahiko. He makes flowers bloom into the past and lays his head to sleep on a stone. Just who exactly are you? The redwing suddenly lost its wingpower and fell like a pebble straight for the grasses by the shore.

(right)

Benesse House Museum

Opening Hour 8:00~21:00 (last entry 20:00) Open everyday

Admission 1,030 yen (Free admission for children 15 years old and under, and overnight guests at Benesse House)

Location Gotanji, Naoshima, Kagawa, 761-3110, JAPAN Phone +81-(0) 87-892-3223 (9:00~20:00)

Benesse Art Site Naoshima <http://www.benesse-artsite.jp/en/>

850-2, Naoshima, Kagawa, 761-3110, JAPAN Phone +81-(0)87-892-2887 Fax +81-(0)87-840-8277

For more information, please contact Yukari Stenlund at BASN-press@mail.benesse.co.jp

Benesse
Art Site
Naoshima

*For press inquiry, please fill out the application by visiting <http://benesse-artsite.jp/en/contact/press/>